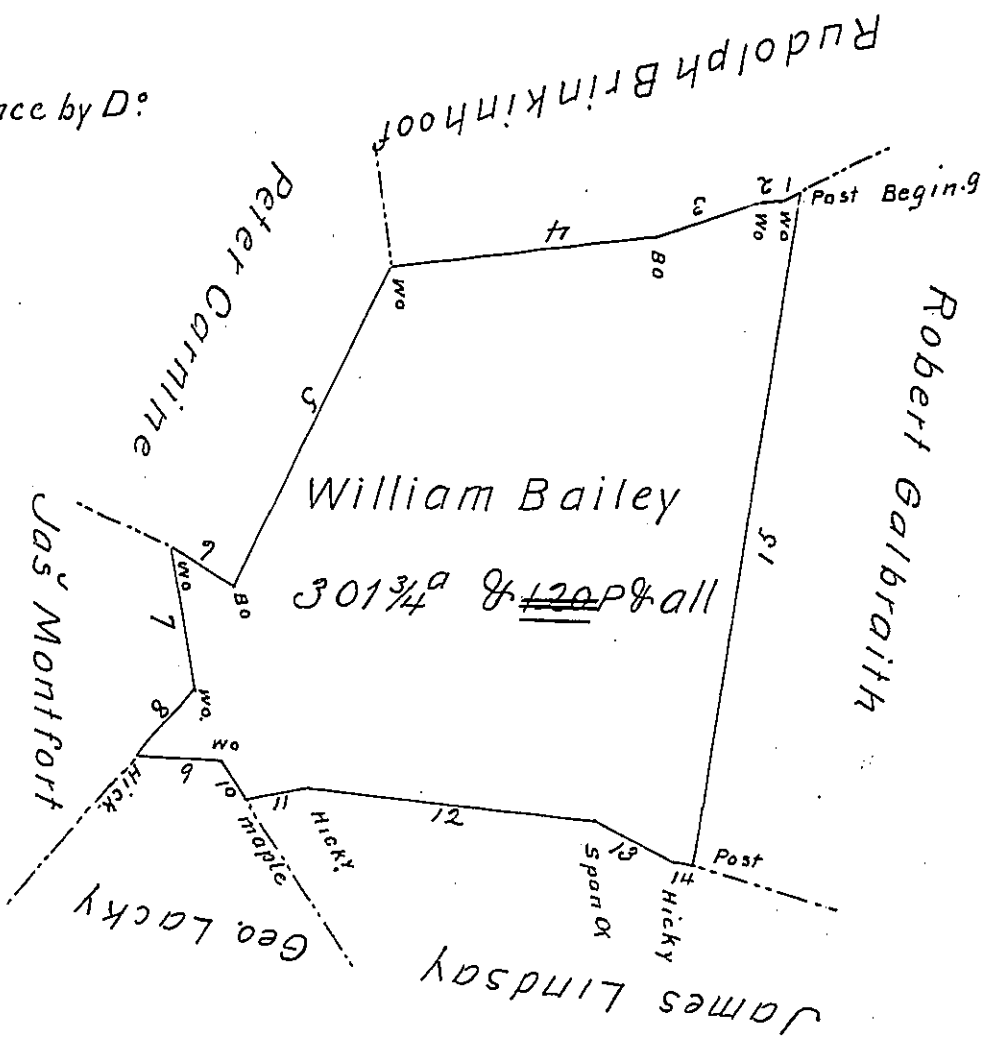


Courses Beginning a Post
in Rudolph Brinkinroof's Line thence by D°

- N° 1 S 64½ W 64 P Wo
- N° 2 S 84½ W 15 P Wo
- N° 3 S 72° W 46 P Bo
- N° 4 S 83½ W 115 P Wo
- N° 5 S 27¼ W 154.5 P Bo
- N° 6 N 58¼ W 32.6 P Wo
- N° 7 S 11¼ E 60.8 P Wo
- N° 8 S 39° W 38.1 P Hicky
- N° 9 S 88½ E 36 P ~~Maple~~ Wo
- N° 10 S 33° E 22.3 P Maple
- N° 11 N 77½ E 28.8 Hicky
- N° 12 S 84¼ E 124.2 Span. Ox
- N° 13 S 69° E 44.4 Hicky
- N° 14 S 83° E 6.3 Post
- N° 15 N 9¼ E 288 Post



Situated in Mountpleasant Township York
County and Surveyed the 8th day of April 1785
in pursuance of a Warrant dated Oct. 20th 1784

By Moses McLean D^o
To John Lukens Esq. Suror. Genl.

A^d there is an Error in the Protraction but
not in the Notes. E. L.

IN TESTIMONY that the above is a copy of the original remaining on file in
the Department of Internal Affairs of Pennsylvania, made
conformably to an Act of Assembly approved the 16th day of
February, 1833, I have hereunto set my Hand and caused
the Seal of said Department to be affixed at Harrisburg,
this second day of November 1903.

Isaac P. Brown
Secretary of Internal Affairs.